



OPEN MEETING

REGULAR MEETING OF THE GOLDEN RAIN FOUNDATION MOBILITY AND VEHICLES COMMITTEE*

**Wednesday, February 7, 2024, 1:30 PM
24351 El Toro Road, Laguna Woods, CA
Board Room/Virtual**

Laguna Woods Village owners/residents are welcome to participate in all open committee meetings and submit comments or questions regarding virtual meetings using one of two options:

1. Join the Committee meeting via a Zoom link at: <https://us06web.zoom.us/j/93335974508> or by calling 669-900-6833 Access Code: 933 3597 4508
2. Via email to meeting@vmsinc.org any time before the meeting is scheduled to begin or during the meeting. Please use the name of the committee in the subject line of the email. Name and unit number must be included.

NOTICE AND AGENDA

This Meeting May Be Recorded

1. Call to Order
2. Acknowledgement of Media
3. Approval of the Agenda
4. Approval of Meeting Report for November 6, 2023
5. Chair's Remarks
6. Member Comments (Items not on the Agenda)
7. Response to Member Comments
8. Director's Report
 - 2023 Ridership

Items for Discussion:

9. 2024 Vehicle CIP - Security Vehicles Specifications
10. 2024 Vehicle CIP - Transportation Bus Specifications

Items for Future Agendas:

To be determined

Concluding Business:

- Committee Member Comments
- Date of Next Meeting: Wednesday, May 1, 2024
- Adjournment

*A quorum of the GRF Board or more may also be present at the meeting.

Ryna Rothberg, Chair
Robert Carroll, Staff Officer
Telephone: 949-597-4638

THIS PAGE LEFT BLANK INTENTIONALLY



OPEN MEETING

**REPORT OF REGULAR MEETING OF THE GOLDEN RAIN FOUNDATION
MOBILITY AND VEHICLES COMMITTEE**

**Monday, November 6, 2023 – 9:30 a.m.
Laguna Woods Village Community Center Board Room
24351 El Toro Road, Laguna Woods, CA 92637**

MEMBERS PRESENT: Elsie Addington (Chair), Alison Bok, Cush Bhada, Egon Garthoffner, Sue Stephens, Moon Yun

MEMBERS ABSENT: Azar Asgari

OTHERS PRESENT: Juanita Skillman, Bunny Carpenter, Nancy Carlson, Ellen Leonard, Suzanne Model

STAFF PRESENT: Robert Carroll, Francisco Perez, Joana Rocha, Sandra Spencer

1. Call to Order

Chair Addington called the meeting to order at 9:30 a.m.

2. Acknowledgment of Media

None present.

3. Approval of the Agenda

Hearing no objections, the agenda was approved by unanimous consent.

4. Approval of Meeting Report for

The meeting report for August 2, 2023, was unanimously approved as written.

5. Chair's Remarks

Chair Addington thanked the Directors and Staff

6. Member Comments (Items Not on the Agenda)

- A member requested a comprehensive report of vehicles and their associated information.
- One of our members has inquired about the reason behind having a considerable number of idle vehicles and a significant amount of empty buses running. Also, would like security to use bikes, scooters, or Golf cars.

7. Response to Member Comments

- Director Egon commented that it's an excellent idea to have a vehicle inventory list
- Director Cush commented that having staff create a complex list would take staff time and money.
- Chair Addington commented that all the details are available in the Green book.

8. Director's Report

Staff provided the committee with an overview of the Laguna Woods Village Transportation ridership for the Fixed-Route, Journey, and BOOST transportation programs.

Mr. Carroll provided information on ridership for destination shopping. He also commented on transportation updates, including new meeting schedules and targeted areas to increase awareness.

Staff also provided a map of Laguna Woods Transportation boundaries.

- Chair Addington commented that she did notice the transportation Pop-up booth in clubhouse 1
- Director Bok commented on the ridership numbers
- Director Yun commented on transportation services
- Mr. Carroll praised our transportation service, highlighting its superiority over others
- Director Carpenter confidently stated that transportation is a significant attraction to the village.
- Member Leonard asked questions about the boost program.
- Member Carlson commented on transportation research and other transportation usage.
- Mr. Carroll provided a response to the member's comments and addressed all the questions that were asked.
- Director Egon commented on the overall percentage of users.

Items for Discussion

9. 2024 Vehicle Specification

Director Bok revised the motion to approve specifications, excluding security vehicles and a 9-passenger bus.

Items for Future Agendas:

- To be determined.

Concluding Business:

Committee Member Comments - None

Date of Next Meeting – Wednesday, February 7, 2023, at 1:30 p.m.

Adjournment - The meeting was adjourned at 3:32 p.m.


Juanita Skillsman (Dec 12, 2023 17:36 PST)

Elsie Addington, Chair
Robert Carroll, Staff Officer
Telephone: 949-597-4242

THIS PAGE LEFT BLANK INTENTIONALLY

STAFF REPORT

DATE: February 7, 2024
FOR: Mobility and Vehicles Committee
SUBJECT: General Services Director's Report

RECOMMENDATION

Receive and file report.

BACKGROUND

At each meeting of the Mobility and Vehicles Committee, the General Services Director provides information related to the Village transportation program and the operational costs of the Village vehicle fleet. The reports are varied at each meeting and are submitted to the Committee to provide a broad spectrum of information on a variety of topics. Attached to this report are lists of (1) GRF Vehicles and (2) GRF Specialty Equipment.

DISCUSSION

The Bus transportation system consists of the following three programs:

The **Fixed Route** service, also known as the **Easy Rider** provides transportation for residents through neighborhood fixed routes and commercial fixed routes. A total of nine passenger shuttle buses are used for this program.

The Laguna Woods Village **Journey** program provides curb-to-curb transportation for preapproved residents with medical needs. Residents schedule their rides in advance by calling the Transportation office. Journey drivers are employed by Village Management Services. One to two shuttle buses are used for this program.

The **BOOST** on-demand rideshare program is provided via a contractual partnership with Lyft Inc. BOOST services Laguna Woods Village residents when the Fixed Route service is not operating. Residents can schedule a ride via mobile application or by calling the Transportation office. Drivers are contracted through Lyft Inc. and use their personal vehicles.

Ridership Data and Trends

When residents and their guests ride the Village buses or utilize the Journey or BOOST programs, their trips are tracked. Each time a rider enters a bus, the RFID chip on their Identification Card records a 'trip.' Trips provided through the Journey program are tracked by

the 'Ride Now' scheduling software. Trips provided through the BOOST rideshare program are tracked by data provided by Lyft Inc.

Ridership trends for the Easy Rider fixed route, Journey program, and BOOST program were significantly affected by State required COVID-19 social distancing practices.

Easy Rider Fixed Route System

Beginning March 21, 2020, the Fixed Route program reduced its operating hours to Monday through Friday, 9 to 5 p.m., to adjust to COVID-19 social distancing requirements, subsequently causing a reduction in ridership. Ridership prior to the decrease in March 2020 was at 9,628 trips for the month of February 2020. Ridership gradually increased beginning the second quarter of 2021, concluding the year with an overall monthly average of 5,302 rides for 2021. For 2022, the monthly ridership averaged 6,333 trips for January through December. The average monthly ridership between January to December 2023 was 6,705 trips. See attachment #1.

Journey Program

Journey continues to operate Monday through Sunday, with its hours operating from 8 to 4 p.m. Ridership decreased in March 2020, with a gradual increase beginning the third quarter of 2020. For 2021, the monthly average of completed rides was 512 trips. In 2022, the average number of completed rides increased, with a monthly average of 605 completed trips from January through December. The average number of completed trips between January and December 2023 was 530 trips. See attachment #2.

BOOST Program

Beginning March 24, 2020, BOOST reduced its operating hours to Monday through Friday, 7 to 9 a.m. only. All weeknight and weekend hours were suspended in response to the Governor's Stay at Home order and the closing of all Clubhouses and activities. Subsequently, BOOST trips decreased substantially in 2020. Trips gradually increased in the second quarter of 2021, totaling a monthly average of 149 trips from January through December. The total monthly average for 2022 was 417 trips. The average number of completed trips between January and December 2023 was 524. See attachment #3.

In late March 2021, Boost's operating hours extended to Sundays for transportation to Church. In mid-June 2021, after the Village Clubhouses reopening, BOOST's operating hours extended to include evenings and weekends. Current Boost hours are:

- Monday through Friday, 7 to 9 a.m. and 5 to 10 p.m.
- Saturday, 8 a.m. to 10 p.m.
- Sunday 8 a.m. to 5 p.m.

Upcoming Transportation Pop-Up Booth Locations

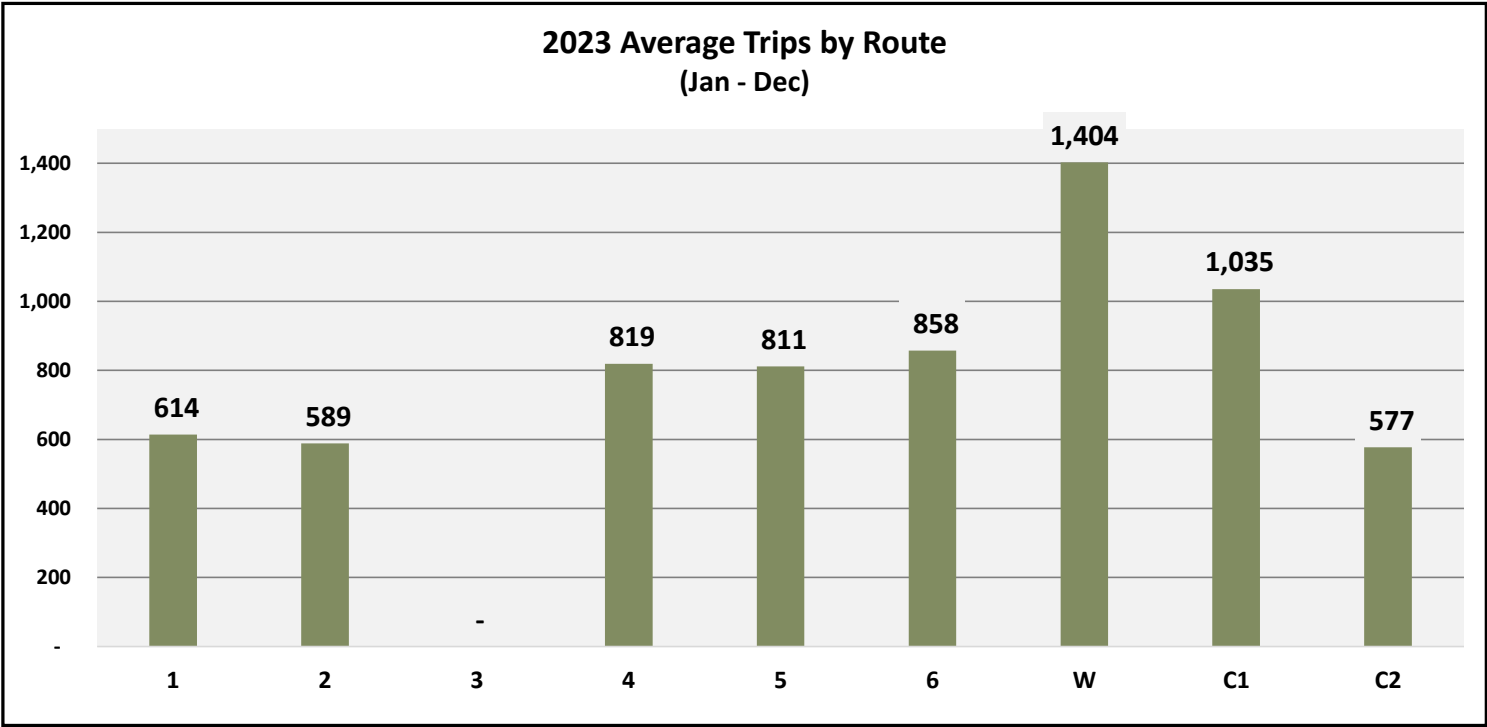
Date	Location
3/14/2024	Towers Lobby
5/09/2024	Administration Building
7/11/2024	Clubhouse 1

Prepared By: Robert Carroll, Director of General Services

ATTACHMENT(S)

ATT-1: Easy Rider Year to Date Ridership
ATT-2: Journey Year to Date Ridership
ATT-3: BOOST Year to Date Ridership
ATT-4: Laguna Woods Village Transportation Boundaries
ATT-5: List of GRF Vehicles
ATT-6: List of GRF Specialty Equipment

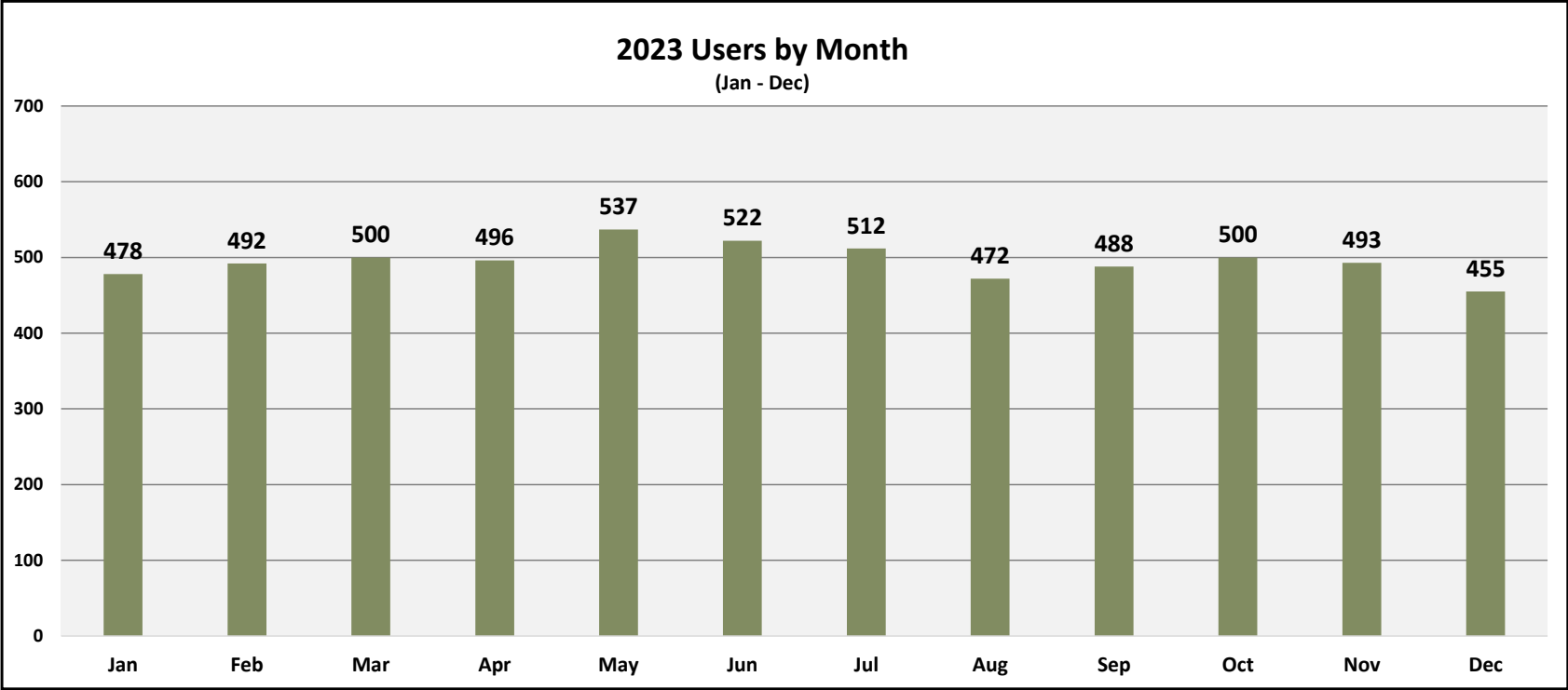
Fixed Route Ridership by Route



**Route 3 was temporarily suspended beginning mid July 2021*



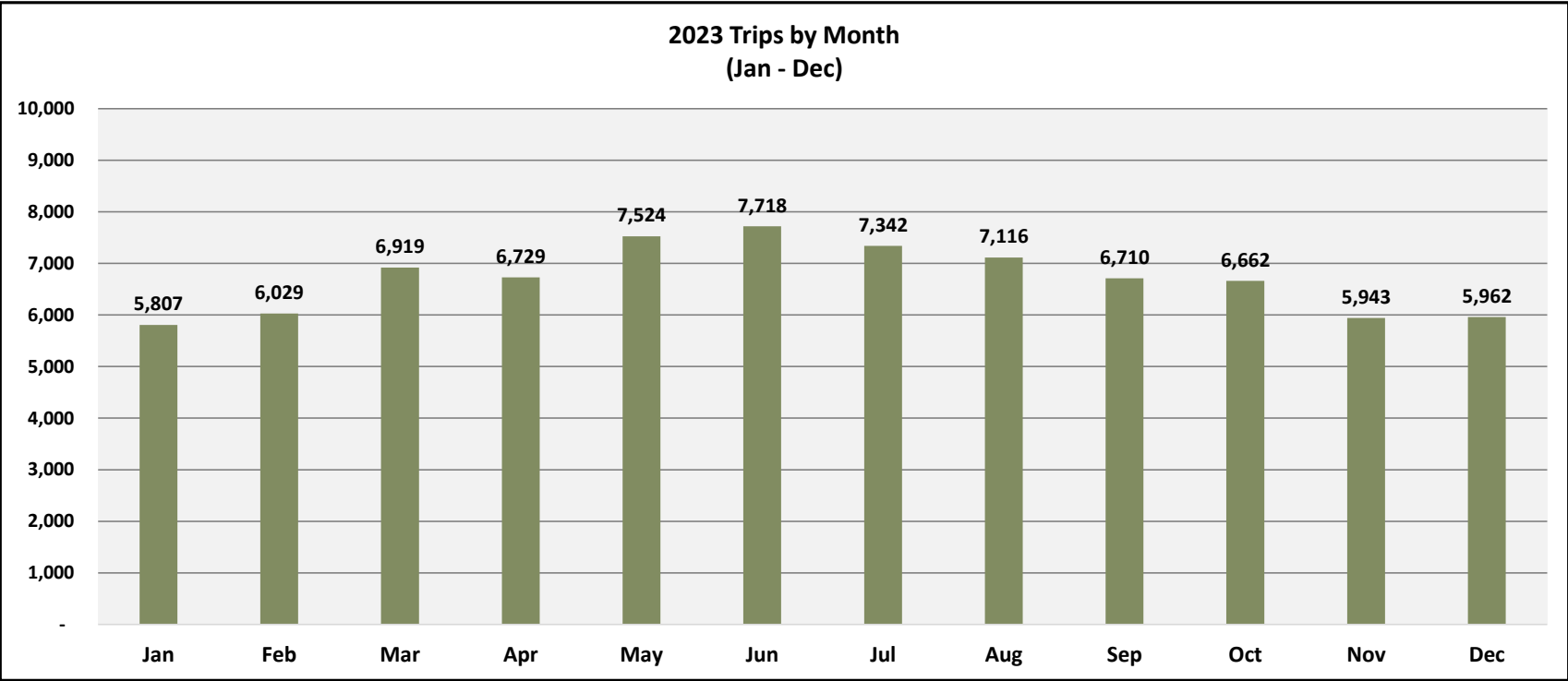
Fixed Route Ridership by User



**February 2020 ridership was 636 users*



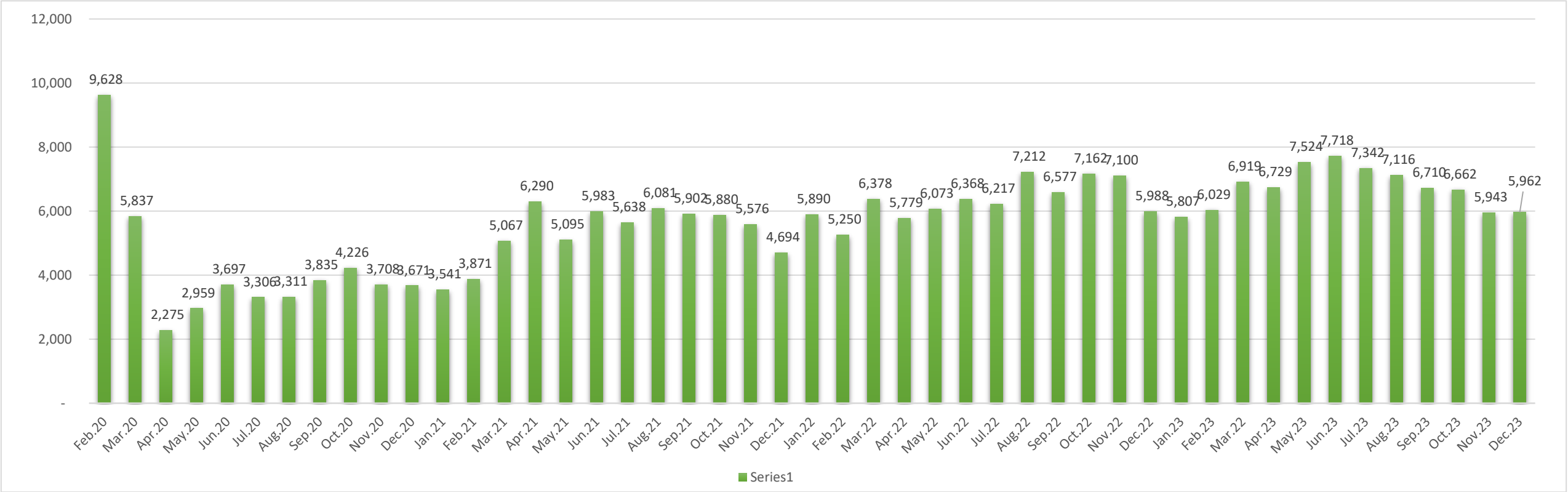
Fixed Route Ridership by Trips



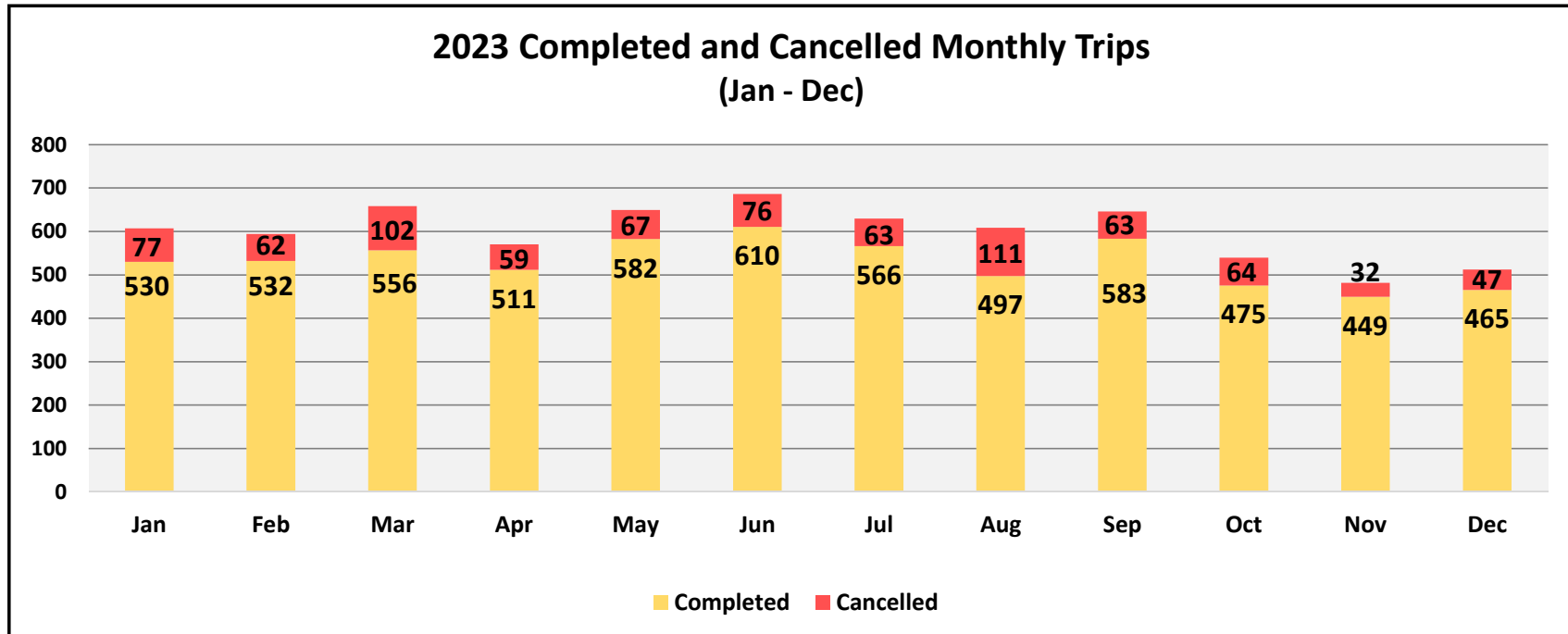
**February 2020 ridership was 9,628 trips*



General Services Department
Transportation Division
Easy Rider Program Ridership
February 2020 Through December 2023



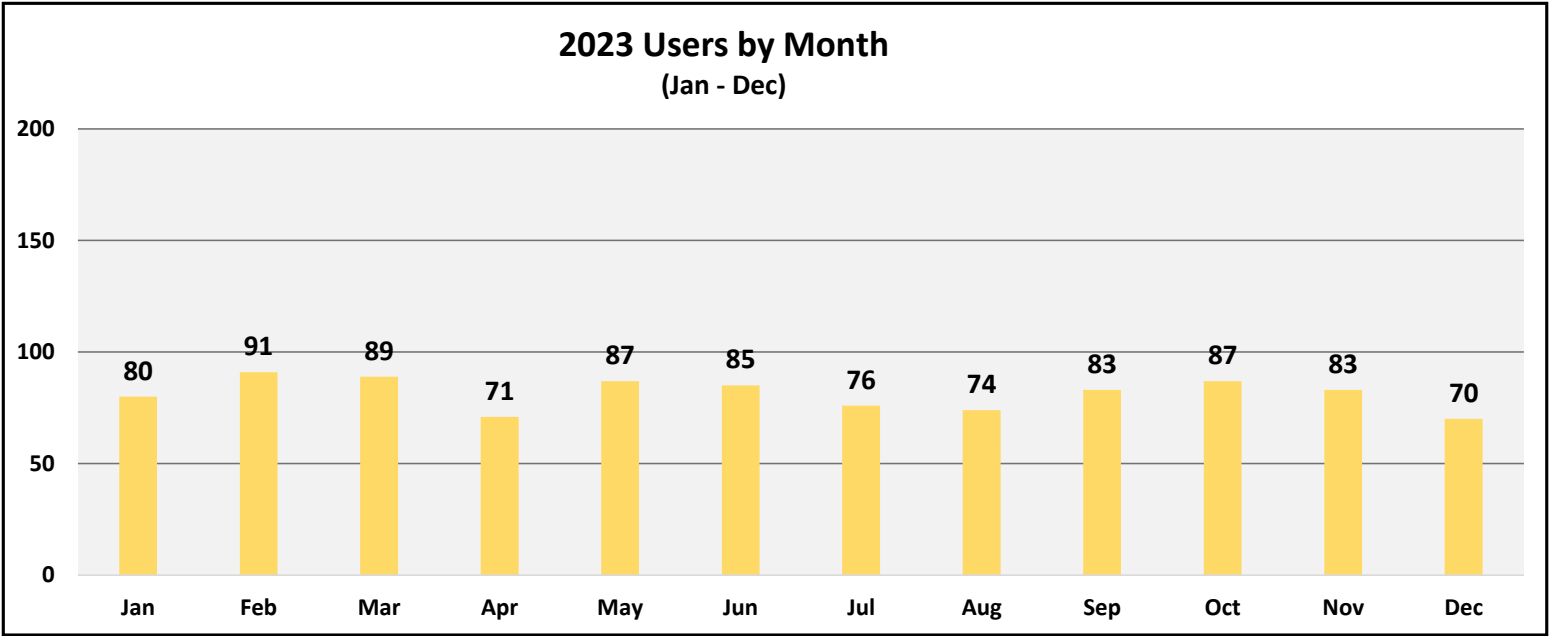
Journey Ridership by Trips



**February 2020 ridership was at 300 trips (New program initiated January 2020)*



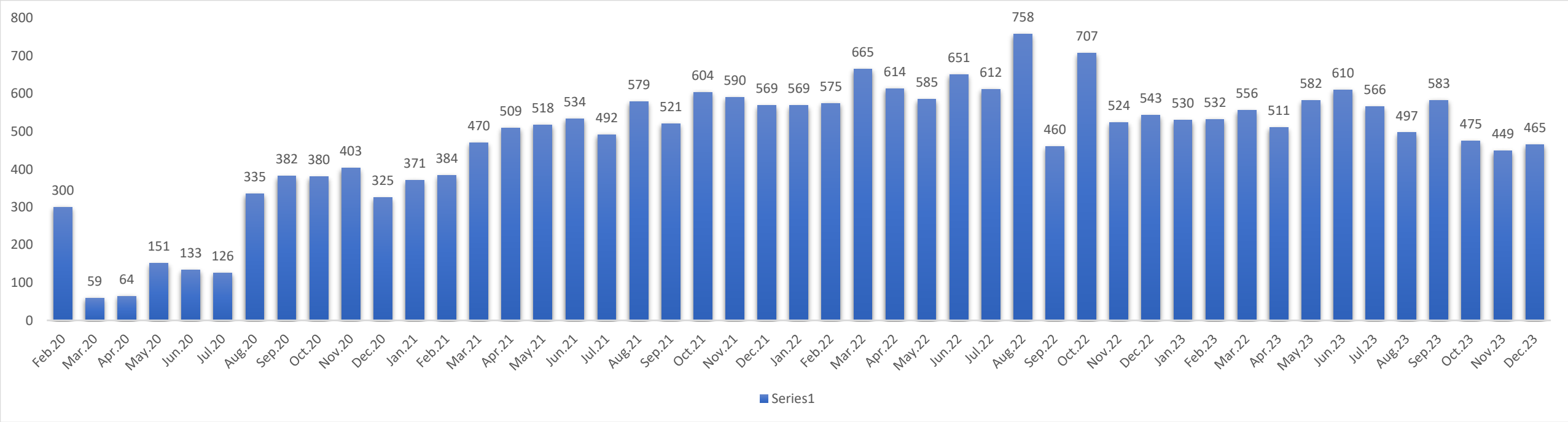
Journey Ridership by User

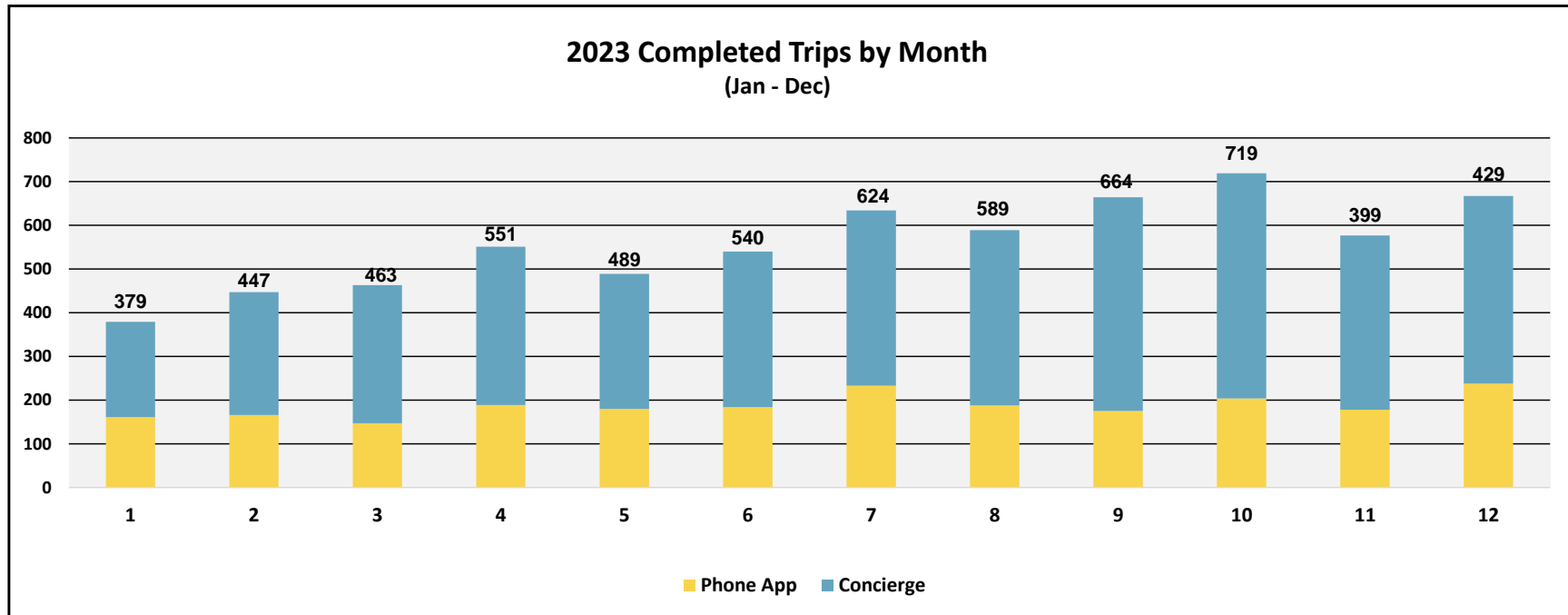


**February 2020 ridership was at 124 users*



General Services Department
Transportation Division
Journey Program Ridership
February 2020 Through December 2023

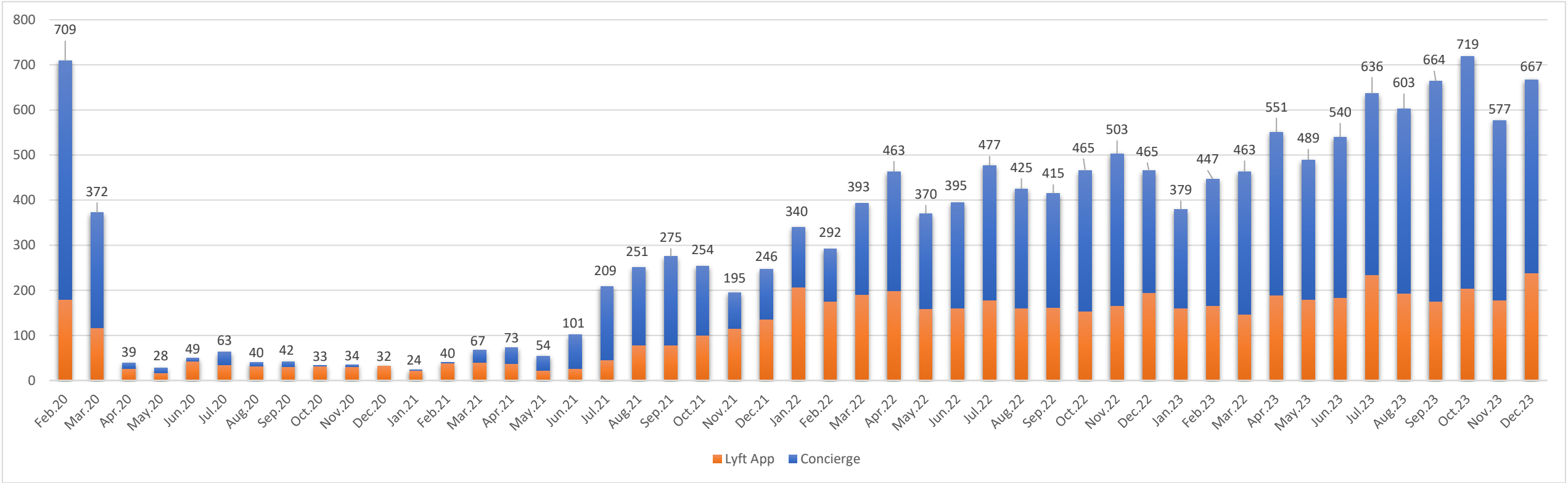


BOOST Ridership by Scheduling Method

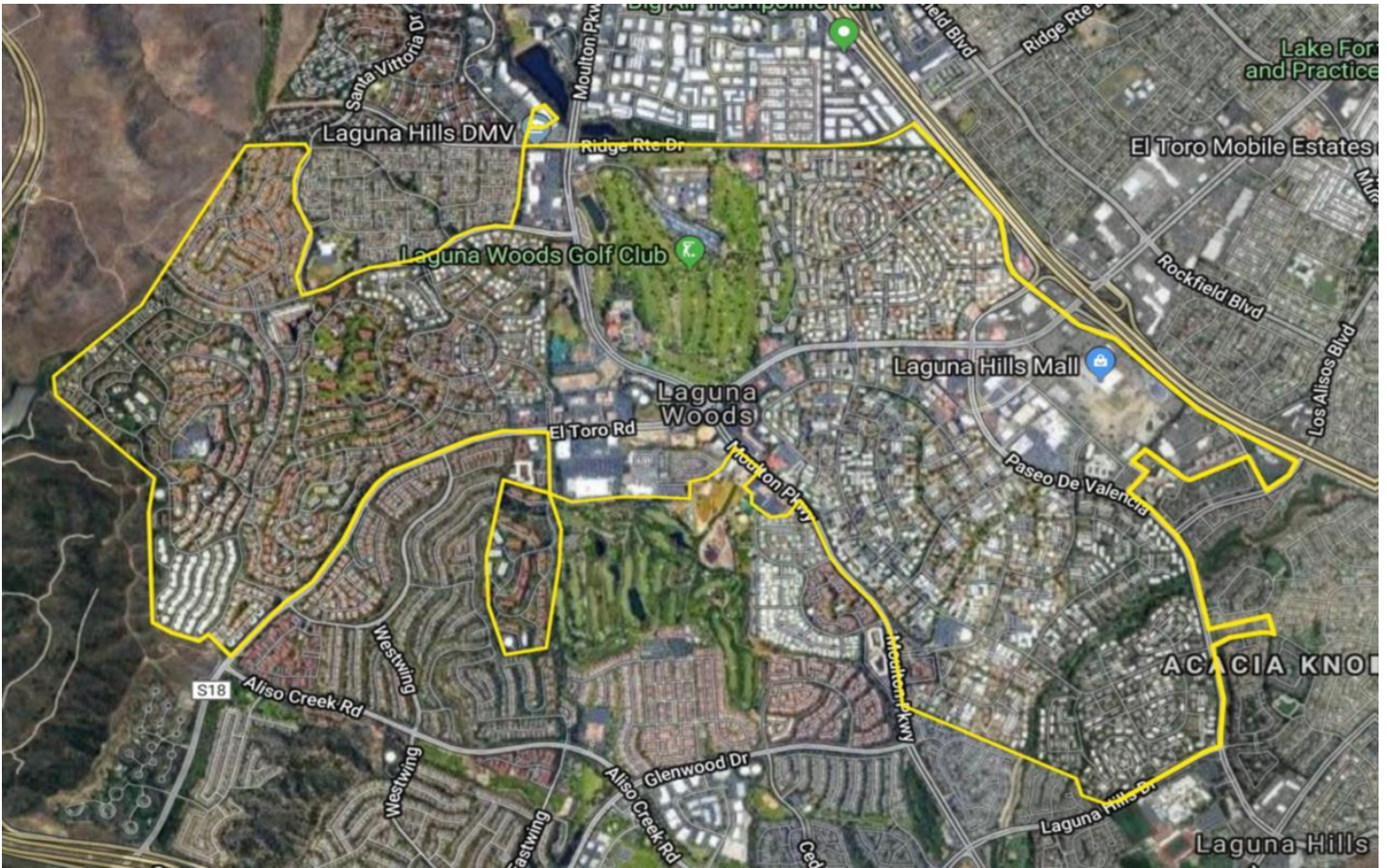
**February 2020 ridership was 703 trips*



General Services Department
Transportation Division
Boost Program Ridership
February 2020 Through December 2023



Laguna Woods Village Transportation Boundaries



THIS PAGE LEFT BLANK INTENTIONALLY

**General Services Department
Unit Inventory - Active Vehicles
Janaury 2024**

Asset Number	License#	Year	Make	Model	Serial#	WC	WC Description	WC Department
FA-S01247	88982L3	2022	Ford	TRANSIT	NM0LS6S26N1517567	241	241 – Mail and Copy Service	Department of Financial Services
FA-S01058		2020	Ford	F-350	1FDRF3G64LEE09607	311	311 – Warehouse	Department of Financial Services
A00806	46825A1	2010	Dodge	CARAVAN	2D4CN1AE8AR297821	20	020 – Cable TV Network	Department of General Services
A00808	46823A1	2010	Dodge	CARAVAN	2D4CN1AE6AR390594	20	020 – Cable TV Network	Department of General Services
A00809	46826A1	2010	Dodge	CARAVAN	2D4CN1AE8AR390595	20	020 – Cable TV Network	Department of General Services
FA-S01245	88981L3	2022	Ford	TRANSIT	NM0LS6S22N1516528	20	020 – Cable TV Network	Department of General Services
FA-S01248	88985L3	2022	Ford	TRANSIT	NM0LS6S22N1517565	20	020 – Cable TV Network	Department of General Services
A00807	A6827A1	2010	Dodge	CARAVAN	2D4CN1AE7AR390863	20	020 – Cable TV Network	Department of General Services
A03643	7WDM644	2016	Ford	EDGE	2FMPK3G92GBC67031	30	030 – TV Studio	Department of General Services
A03661	47596C2	2016	Nissan	Frontier	1N6BD0CT3GN775292	902	902 – General Services Admin	Department of General Services
FA-S01055	8TVY641	2020	Chevrolet	BOLT	1G1FY6S09L4139522	902	902 – General Services Admin	Department of General Services
702577	6N85984	2001	Ford	RANGER	1FTYR10U61TA64559	935	935 – Janitorial	Department of General Services
702804	8A77336	2006	Ford	RANGER	1FTYR10U26PA57592	935	935 – Janitorial	Department of General Services
702841	8G79042	2007	Ford	RANGER	1FTYR10U57PA56700	935	935 – Janitorial	Department of General Services
702843	8G78974	2006	Ford	RANGER	1FTYR10U97PA56702	935	935 – Janitorial	Department of General Services
702972	8U77579	2009	Ford	F-250	1FTNF20549EA42909	935	935 – Janitorial	Department of General Services
702979	85931E1	2008	Ford	RANGER	1FTYR10D39PA24170	935	935 – Janitorial	Department of General Services
A02954	69761R1	2014	Ford	E-150 VAN	1FMNE1BL2EDA86007	935	935 – Janitorial	Department of General Services
A02955	70064R1	2014	Ford	E-150 VAN	1FMNE1BL4EDA86008	935	935 – Janitorial	Department of General Services
A02965	31140M1	2014	Ford	F-250	1FTBF2AT4FEA03863	935	935 – Janitorial	Department of General Services
C01687	24535M2	2018	Ford	TRANSIT	NM0LS6E73J1359383	935	935 – Janitorial	Department of General Services
702576	6N85985	2001	Ford	RANGER	1FTYR10U51TA64553	936	936 – Streets & Sidewalks	Department of General Services
702719	7C41205	2003	Ford	F-250	3FTNF20L23MB49330	936	936 – Streets & Sidewalks	Department of General Services
702895	8T09705	2008	Ford	RANGER	1FTYR10U28PB12903	936	936 – Streets & Sidewalks	Department of General Services
702973	39621N2	2009	Ford	F-250	1FTNF20509EA42910	936	936 – Streets & Sidewalks	Department of General Services
A00834	33739F1	2012	Ford	F-350	1FDRF3GT0CEC55886	936	936 – Streets & Sidewalks	Department of General Services
A00835	33741F1	2012	Ford	F-350	1FDRF3GT7CEC55884	936	936 – Streets & Sidewalks	Department of General Services
A02947	86365R1	2014	International	DURA STAR	3HAJTSKN4FL512500	936	936 – Streets & Sidewalks	Department of General Services
A02975	87867P1	2014	International	DURA STAR	3HAJTSKN6FL512501	936	936 – Streets & Sidewalks	Department of General Services
A02989	7DWM983	2014	Freightliner	FL70	1FVACXDT2EHFX5886	936	936 – Streets & Sidewalks	Department of General Services
FA-S01052	70939B3	2020	Ford	F-150 XL	1FTEX1CP3LKF58224	936	936 – Streets & Sidewalks	Department of General Services
FA-S01060		2020	Ford	F-350	1FDRF3G69LEE88482	936	936 – Streets & Sidewalks	Department of General Services
FA-S01220	62126K3	2022	Ford	F-350	1FDRF3G64NEC68007	936	936 – Streets & Sidewalks	Department of General Services
702482	5Y23252	1999	Ford	F-250	1FTNF20L6XEC97170	945	945 – GRF Janitorial	Department of General Services
702675	7B64081	2003	Ford	RANGER	1FTYR10U43PA60201	945	945 – GRF Janitorial	Department of General Services
702678	7B64085	2003	Ford	RANGER	1FTYR10U13PA60205	945	945 – GRF Janitorial	Department of General Services
702839	8G79036	2007	Ford	F-250	1FTNF20567EB44337	945	945 – GRF Janitorial	Department of General Services
702872	8N64434	2008	Ford	RANGER XL	1FTYR10U88PA39004	945	945 – GRF Janitorial	Department of General Services

A02953	69762R1	2014 Ford	E-150 VAN	1FMNE1BL0EDA86006	945 945 – GRF Janitorial	Department of General Services
FA-S01246	88983L3	2022 Ford	TRANSIT	NM0LS6S20N1517564	945 945 – GRF Janitorial	Department of General Services
702488	5Y28862	1999 Ford	E-250 VAN	1FTPE24L4XHA70984	960 960 – Fleet Maintenance	Department of General Services
A01214	34753F1	2012 Ford	F-350	1FDRF3GT9CEC55885	960 960 – Fleet Maintenance	Department of General Services
A00500	7Y1Y114	2017 Toyota	Sienna	5TDKZ3DC4HS822460	970 970 – Transportation	Department of General Services
A00506	29119G2	2016 Ford	TRANSIT	NM0GE9F78G1231884	970 970 – Transportation	Department of General Services
A03012	94764R1	2014 Arboc	EXPRESS	1GB6G5BL7E1171666	970 970 – Transportation	Department of General Services
A03016	26514T1	2014 Arboc	4500	1GB6G5BL0E1182542	970 970 – Transportation	Department of General Services
A03625	80248X1	2015 Arboc	4500	1GB6G5BL8F1248806	970 970 – Transportation	Department of General Services
A03626	80247X1	2015 Arboc	4500	1GB6G5BL3F1286489	970 970 – Transportation	Department of General Services
A03627	80250X1	2015 Arboc	4500	1GB6G5BL7F1287872	970 970 – Transportation	Department of General Services
C01559	05220K2	2017 Arboc	PROMSTR	3C7WRVLG9GE132703	970 970 – Transportation	Department of General Services
C01738	41174U2	2018 Arboc	SPT OF	1FDRS9PMXHKB18213	970 970 – Transportation	Department of General Services
C01896	14523U2	2019 Ford	TRANSIT	NM0GE9E29K1403208	970 970 – Transportation	Department of General Services
C01911	68980T2	2016 Chevrolet	4500	1GB6GUBG0G1312593	970 970 – Transportation	Department of General Services
C01921	97208U2	2016 Chevrolet	4500	1GB6GUBG6G1188183	970 970 – Transportation	Department of General Services
C01995	86549X2	2019 Chevrolet	4500	1HA6GUBB8KN011891	970 970 – Transportation	Department of General Services
FA-S01135		2020 Arboc	E-450	1FDFF4FS9KDC34477	970 970 – Transportation	Department of General Services
FA-S01325		2023 Dodge	PROMSTR	3C6MRVUG6NE138790	970 970 – Transportation	Department of General Services
FA-S01326		2023 Dodge	PROMSTR	3C6MRVUG6NE115428	970 970 – Transportation	Department of General Services
S01017		2019 Chevrolet	4500	1HA6GUBB0LN003740	970 970 – Transportation	Department of General Services
A00478	56772F1	2011 Ford	RANGER	1FTLR4EE1BPA17544	500 500 – Landscape Admin	Department of Landscape Services
A00715	04419G1	2011 Ford	RANGER	1FTKR1EEXBPA92270	500 500 – Landscape Admin	Department of Landscape Services
FA-S01051	70938B3	2020 Ford	F-150 XL	1FTEX1CP1LK58223	500 500 – Landscape Admin	Department of Landscape Services
FA-S01053	70940B3	2020 Ford	F-150 XL	1FTEX1CP5LK58225	500 500 – Landscape Admin	Department of Landscape Services
FA-S01236	39306L3	2021 Ford	RANGER	1FTER1EHXMLD79948	500 500 – Landscape Admin	Department of Landscape Services
702485	5Y23247	1999 Ford	F-250	1FTNF20LXXEC97169	510 510 – Improvement/Restoration	Department of Landscape Services
702584	6N85996	2001 Ford	RANGER	1FTYR10U21TA64560	511 511 – Nursery/Composting	Department of Landscape Services
A03568	21919W1	2016 International	4300SBA	3HAMMMMN0GLO78225	511 511 – Nursery/Composting	Department of Landscape Services
702464	5Y04951	1999 Ford	E-350	1FBNE31L0XHA65884	520 520 – GRF Grounds Maintenance	Department of Landscape Services
702483	5Y23251	1999 Ford	F-250	1FTNF20LXXEC97172	520 520 – GRF Grounds Maintenance	Department of Landscape Services
700444	8Y08615	2009 Ford	RANGER	1FTYR44E19PA63702	530 530 – Grounds Maintenance	Department of Landscape Services
702384	3VVD634	1997 Ford	CLUB	1FBJS31L2VHB54280	530 530 – Grounds Maintenance	Department of Landscape Services
702484	5Y23248	1999 Ford	F-250	1FTNF20L1XEC97173	530 530 – Grounds Maintenance	Department of Landscape Services
702882	8R07172	2008 Ford	F-250	1FTNF20558EC99835	530 530 – Grounds Maintenance	Department of Landscape Services
A00729	25417G1	2012 Ford	F-250	1FTBF2A64CEB42400	530 530 – Grounds Maintenance	Department of Landscape Services
A00730	9E76704	2012 MACK	CXU613 - Semi	1M1AW02Y6CM017338	530 530 – Grounds Maintenance	Department of Landscape Services
A00800	6WSP542	2012 Ford	E-350	1FBSS3BL2CDB13901	530 530 – Grounds Maintenance	Department of Landscape Services
A02964	31139M1	2014 Ford	F-250	1FTBF2AT2FEA03862	530 530 – Grounds Maintenance	Department of Landscape Services
A02966	31141M1	2014 Ford	F-250	1FTBF2AT6FEA03864	530 530 – Grounds Maintenance	Department of Landscape Services
A02969	69766R1	2014 Ford	E-350 VAN	1FBSS3BL6EDA86009	530 530 – Grounds Maintenance	Department of Landscape Services
A02970	69765R1	2014 Ford	E-350 VAN	1FBSS3BL2EDA86010	530 530 – Grounds Maintenance	Department of Landscape Services
A02971	69768R1	2014 Ford	E-350 VAN	1FBSS3BL4EDA86011	530 530 – Grounds Maintenance	Department of Landscape Services
C01679	24547M2	2018 Ford	F-250	1FTBF2A68JEC46109	530 530 – Grounds Maintenance	Department of Landscape Services

C01680	24536M2	2018 Ford	F-250	1FTBF2A66JEC46108	530 530 – Grounds Maintenance	Department of Landscape Services
C01927	60255V2	2019 Ford	F-250	1FTBF2A64KEF83636	530 530 – Grounds Maintenance	Department of Landscape Services
FA-S01050	70942B3	2020 Ford	F-250	1FT7X2A65LEE69584	530 530 – Grounds Maintenance	Department of Landscape Services
FA-S01061		2020 Ford	F-350	1FDRF3G62LEE88484	530 530 – Grounds Maintenance	Department of Landscape Services
FA-S01062		2020 Ford	F-350	1FDRF3G60LEE88483	530 530 – Grounds Maintenance	Department of Landscape Services
FA-S01163	BT36D38	2022 Ford	F-250	1FT7W2A69NEC35650	530 530 – Grounds Maintenance	Department of Landscape Services
FA-S01165	BT32R18	2022 Ford	F-250	1FT7W2A64NEC68006	530 530 – Grounds Maintenance	Department of Landscape Services
FA-S01166	BT19X77	2022 Ford	F-250	1FT7W2A62NEC35649	530 530 – Grounds Maintenance	Department of Landscape Services
702723	7J90216	2003 Ford	F-250	3FTNF20L43MB49331	540 540 – Irrigation	Department of Landscape Services
702837	8G79038	2007 Ford	F-250	1FTNF20527EB44335	540 540 – Irrigation	Department of Landscape Services
702838	8G79037	2007 Ford	F-250	1FTNF20547EB44336	540 540 – Irrigation	Department of Landscape Services
A03008	32781M1	2014 Ford	TRANSIT	NM0LS7E71E1158108	540 540 – Irrigation	Department of Landscape Services
A03009	32780M1	2014 Ford	TRANSIT	NM0LS7E71E1158111	540 540 – Irrigation	Department of Landscape Services
C01688	24534M2	2018 Ford	TRANSIT	NM0LS6E74J1351003	540 540 – Irrigation	Department of Landscape Services
C01689	24494M2	2018 Ford	TRANSIT	NM0LS6E71J1351198	540 540 – Irrigation	Department of Landscape Services
C01690	24496M2	2018 Ford	TRANSIT	NM0LS6E74J1356332	540 540 – Irrigation	Department of Landscape Services
C01691	24495M2	2018 Ford	TRANSIT	NM0LS6E74J1347744	540 540 – Irrigation	Department of Landscape Services
C01692	24530M2	2018 Ford	TRANSIT	NM0LS6E7XJ1360076	540 540 – Irrigation	Department of Landscape Services
C01693	29362M2	2018 Ford	TRANSIT	NM0LS6E74J1360932	540 540 – Irrigation	Department of Landscape Services
C01694	29238M2	2018 Ford	TRANSIT	NM0LS7F7XJ1374998	540 540 – Irrigation	Department of Landscape Services
C01703	32039M2	2018 Ford	TRANSIT	NM0LS7F7XJ1375181	540 540 – Irrigation	Department of Landscape Services
C01704	32051M2	2018 Ford	TRANSIT	NM0LS7F73J1375183	540 540 – Irrigation	Department of Landscape Services
C01945	25734V2	2019 Ford	TRANSIT	1FTYR2CGXKKB57233	540 540 – Irrigation	Department of Landscape Services
702541	6G54235	2000 Ford	F-250	1FTNF20L4YEC85519	550 550 – Small Equipment Repair	Department of Landscape Services
702725	7H72409	2004 Ford	RANGER	1FTYR10U34PA00203	560 560 – Pest Control	Department of Landscape Services
702776	7U30243	2005 Ford	RANGER	1FTYR10U05PA51997	560 560 – Pest Control	Department of Landscape Services
702873	8N64435	2008 Ford	RANGER XL	1FTYR10U18PA39006	560 560 – Pest Control	Department of Landscape Services
702897	8T09702	2008 Ford	RANGER	1FTYR10U78PB12900	560 560 – Pest Control	Department of Landscape Services
702898	8T09704	2008 Ford	RANGER	1FTYR10U28PB12898	560 560 – Pest Control	Department of Landscape Services
702899	8T09707	2008 Ford	RANGER	1FTYR10U98PB12901	560 560 – Pest Control	Department of Landscape Services
702982	8V69763	2009 Ford	RANGER	1FTYR44E59PA01512	560 560 – Pest Control	Department of Landscape Services
A03567	21920W1	2016 International	4300SBA	3HAMMMMN9GL078224	570 570 – Tree Maintenance	Department of Landscape Services
C01660	8EEH731	2018 Ford	TRANSIT	1FMZK1ZG8JKA74730	570 570 – Tree Maintenance	Department of Landscape Services
C01951	8MOM303	2019 Ford	TRANSIT	1FMZK1CM9KKB60838	570 570 – Tree Maintenance	Department of Landscape Services
A03663	47597C2	2016 Nissan	Frontier	1N6BD0CT4GN734654	904 904 – Maintenance Services	Department of Maintenance & Construction
FA-S01056	8TVY642	2020 Chevrolet	BOLT	1G1FY6S05L4139100	904 904 – Maintenance Services	Department of Maintenance & Construction
702570	6N85990	2001 Ford	RANGER	1FTYR10U61TA64562	909 909 – Damage Restoration	Department of Maintenance & Construction
702874	8N64433	2008 Ford	RANGER XL	1FTYR10U68PA39003	909 909 – Damage Restoration	Department of Maintenance & Construction
702888	8P33188	2008 Ford	RANGER	1FTZR44U48PA60996	909 909 – Damage Restoration	Department of Maintenance & Construction
702522	6F07025	2000 Ford	RANGER	1FTYR10V4YPA56598	910 910 – Building Maintenance	Department of Maintenance & Construction
A01856	40826K1	2013 Nissan	Frontier	1N6B0CT2DN716925	910 910 – Building Maintenance	Department of Maintenance & Construction
A03662	47599C2	2016 Nissan	Frontier	1N6BD0CT2GN783156	910 910 – Building Maintenance	Department of Maintenance & Construction
702845	8G78973	2007 Ford	RANGER	1FTYR10U27PA56704	911 911 – Appliance	Department of Maintenance & Construction
702847	8G79039	2007 Ford	RANGER	1FTYR10U67PA56706	911 911 – Appliance	Department of Maintenance & Construction

A00801	28245F1	2012 Ford	F-150	1FTNF1CF7CKD82949	911 911 – Appliance	Department of Maintenance & Construction
C01965		2019 Ford	F-350	1FDRF3G67KEG55906	911 911 – Appliance	Department of Maintenance & Construction
702401	5N78227	1997 Ford	E-250 VAN	1FTHE2429VHB54274	912 912 – Carpentry	Department of Maintenance & Construction
702512	6F07027	2000 Ford	RANGER	1FTYR10V5YPA56593	912 912 – Carpentry	Department of Maintenance & Construction
702521	6F07021	2000 Ford	RANGER	1FTYR10V7YPA56594	912 912 – Carpentry	Department of Maintenance & Construction
702579	6P45164	2001 Ford	RANGER	1FTYR10U41TA64561	912 912 – Carpentry	Department of Maintenance & Construction
702581	6N85988	2001 Ford	RANGER	1FTYR10UX1TA64564	912 912 – Carpentry	Department of Maintenance & Construction
702582	6N80584	2001 Ford	RANGER	1FTYR10E21TA64566	912 912 – Carpentry	Department of Maintenance & Construction
702681	7B64088	2003 Ford	RANGER	1FTYR10U53PA60210	912 912 – Carpentry	Department of Maintenance & Construction
702682	7B88472	2003 Ford	RANGER	1FTYR10U63PA60202	912 912 – Carpentry	Department of Maintenance & Construction
702683	7B88473	2003 Ford	RANGER	1FTYR10U33PA60206	912 912 – Carpentry	Department of Maintenance & Construction
702684	7B88470	2003 Ford	RANGER	1FTYR10U73PA60211	912 912 – Carpentry	Department of Maintenance & Construction
702685	7B88471	2003 Ford	RANGER	1FTYR10U93PA60212	912 912 – Carpentry	Department of Maintenance & Construction
702686	7E31042	2003 Ford	RANGER	1FTYR10U73PA60208	912 912 – Carpentry	Department of Maintenance & Construction
702769	7T58941	2005 Ford	RANGER	1FTYR10U65PA47713	912 912 – Carpentry	Department of Maintenance & Construction
702770	7T58862	2005 Ford	RANGER	1FTYR10U85PA47714	912 912 – Carpentry	Department of Maintenance & Construction
702771	7T58939	2005 Ford	RANGER	1FTYR10UX5PA47715	912 912 – Carpentry	Department of Maintenance & Construction
702772	7T58938	2005 Ford	RANGER	1FTYR10U15PA47716	912 912 – Carpentry	Department of Maintenance & Construction
702773	7T58937	2005 Ford	RANGER	1FTYR10U35PA47717	912 912 – Carpentry	Department of Maintenance & Construction
702774	7U30241	2005 Ford	RANGER	1FTYR10U75PA51995	912 912 – Carpentry	Department of Maintenance & Construction
702775	7U30242	2005 Ford	RANGER	1FTYR10U95PA51996	912 912 – Carpentry	Department of Maintenance & Construction
702790	7R21977	2005 Ford	RANGER	1FTYR10U35PA67904	912 912 – Carpentry	Department of Maintenance & Construction
702803	8A72750	2006 Ford	RANGER	1FTYR10U16PA58328	912 912 – Carpentry	Department of Maintenance & Construction
702807	8A77337	2006 Ford	RANGER	1FTYR10U16PA57597	912 912 – Carpentry	Department of Maintenance & Construction
702840	8G79041	2007 Ford	RANGER	1FTYR10U27PA56699	912 912 – Carpentry	Department of Maintenance & Construction
A01857	41123K1	2013 Nissan	Frontier	1N6B0CT8DN725273	912 912 – Carpentry	Department of Maintenance & Construction
C01621	47268K2	2017 Ford	F-250	1FD7X2A65HED95067	912 912 – Carpentry	Department of Maintenance & Construction
C01659	24532M2	2018 Ford	F-150	1FTMF1CP0JFC65580	912 912 – Carpentry	Department of Maintenance & Construction
C01930	25848V2	2019 Ford	F-250	1FTBF2A65KEF83631	912 912 – Carpentry	Department of Maintenance & Construction
C01932	60205V2	2019 Ford	F-250	1FTBF2A69KEF83633	912 912 – Carpentry	Department of Maintenance & Construction
C01933	60207V2	2019 Ford	F-250	1FTBF2A60KEF83634	912 912 – Carpentry	Department of Maintenance & Construction
C01934	25731V2	2019 Ford	F-250	1FTBF2A62KEF83635	912 912 – Carpentry	Department of Maintenance & Construction
FA-S01059		2020 Ford	F-350	1FDRF3G66LEE09608	912 912 – Carpentry	Department of Maintenance & Construction
FA-S01098		2020 Ford	F-350	1FDRF3G65LEE88561	912 912 – Carpentry	Department of Maintenance & Construction
FA-S01235	39307L3	2021 Ford	RANGER	1FER1EH5MLD80246	912 912 – Carpentry	Department of Maintenance & Construction
702486	5Y26856	1999 Ford	E-250 VAN	1FTPE24L9XHA70981	913 913 – Electrical	Department of Maintenance & Construction
702571	6N85995	2001 Ford	RANGER	1FTYR10U71TA64554	913 913 – Electrical	Department of Maintenance & Construction
702572	6N85986	2001 Ford	RANGER	1FTYR10U41TA64558	913 913 – Electrical	Department of Maintenance & Construction
702573	6N85994	2001 Ford	RANGER	1FTYR10U91TA64555	913 913 – Electrical	Department of Maintenance & Construction
702574	6N85992	2001 Ford	RANGER	1FTYR10U01TA64556	913 913 – Electrical	Department of Maintenance & Construction
702676	7B64082	2003 Ford	RANGER	1FTYR10U83PA60203	913 913 – Electrical	Department of Maintenance & Construction
702677	7B64084	2003 Ford	RANGER	1FTYR10UX3PA60204	913 913 – Electrical	Department of Maintenance & Construction
702805	8A77338	2006 Ford	RANGER	1FTYR10U46PA57593	913 913 – Electrical	Department of Maintenance & Construction
FA-S01234	39305L3	2021 Ford	RANGER	1FTER1EH3MLD79855	913 913 – Electrical	Department of Maintenance & Construction

702536	6G42254	2000 Ford	E-250	1FTNE242XYHA56376	914 914 – Plumbing	Department of Maintenance & Construction
702537	6G42255	2000 Ford	E-250	1FTNE2424YHA56373	914 914 – Plumbing	Department of Maintenance & Construction
702539	6G42257	2000 Ford	E-250	1FTNE2426YHA56374	914 914 – Plumbing	Department of Maintenance & Construction
702567	6N80570	2001 Ford	E-250	1FTNE24L41HA98783	914 914 – Plumbing	Department of Maintenance & Construction
702687	7C87305	2003 Ford	E-250 VAN	1FTNE24L63HA56599	914 914 – Plumbing	Department of Maintenance & Construction
702688	7C81111	2003 Ford	E-250 VAN	1FTNE24L93HA56600	914 914 – Plumbing	Department of Maintenance & Construction
702846	8G79040	2007 Ford	RANGER	1FTYR10U47PA56705	914 914 – Plumbing	Department of Maintenance & Construction
702863	8E6620	2007 Ford	E-250	1FTNE24W17DB07787	914 914 – Plumbing	Department of Maintenance & Construction
702876	8N47408	2008 Ford	E-250	1FTNE24W88DA39327	914 914 – Plumbing	Department of Maintenance & Construction
702877	8N69795	2008 Ford	E-250	1FTNE24W28DA39324	914 914 – Plumbing	Department of Maintenance & Construction
702878	8N47410	2008 Ford	E-250	1FTNE24W68DA39326	914 914 – Plumbing	Department of Maintenance & Construction
702879	8N47407	2008 Ford	E-250 VAN	1FTNE24W48DA39325	914 914 – Plumbing	Department of Maintenance & Construction
702900	8T37584	2008 Ford	RANGER	1FTYR10U08PB12902	914 914 – Plumbing	Department of Maintenance & Construction
C01683	24539M2	2018 Ford	TRANSIT	1FTYR2CG2JKA74734	914 914 – Plumbing	Department of Maintenance & Construction
C01684	24537M2	2018 Ford	TRANSIT	1FTYR2CG7JKA74731	914 914 – Plumbing	Department of Maintenance & Construction
C01685	24538M2	2018 Ford	TRANSIT	1FTYR2CG9JKA74732	914 914 – Plumbing	Department of Maintenance & Construction
C01946	25753V2	2019 Ford	TRANSIT	1FTYR2CG8KKB57229	914 914 – Plumbing	Department of Maintenance & Construction
C01947	25752V2	2019 Ford	TRANSIT	1FTYR2CG4KKB57230	914 914 – Plumbing	Department of Maintenance & Construction
C01948	25736V2	2019 Ford	TRANSIT	1FTYR2CG6KKB57231	914 914 – Plumbing	Department of Maintenance & Construction
C01949	25735V2	2019 Ford	TRANSIT	1FTYR2CG8KKB57232	914 914 – Plumbing	Department of Maintenance & Construction
C01950	25732V2	2019 Ford	TRANSIT	1FTYR2CG1KKB57234	914 914 – Plumbing	Department of Maintenance & Construction
FA-S01277		2022 Ford	TRANSIT	1FTBR1CG5NKA60879	914 914 – Plumbing	Department of Maintenance & Construction
FA-S01305		2022 Ford	TRANSIT	1FTBR1CG8NKA61038	914 914 – Plumbing	Department of Maintenance & Construction
FA-S01306		2022 Ford	TRANSIT	1FTBR1CG3NKA60220	914 914 – Plumbing	Department of Maintenance & Construction
702530	6F07030	2000 Ford	RANGER	1FTYR10VXYPA63037	917 917 – Interior Components	Department of Maintenance & Construction
702800	8A72748	2006 Ford	RANGER	1FTYR10U86PA57595	917 917 – Interior Components	Department of Maintenance & Construction
702801	8A72749	2006 Ford	RANGER	1FTYR10UX6PA57596	917 917 – Interior Components	Department of Maintenance & Construction
702802	8A72752	2006 Ford	RANGER	1FTYR10U36PA57598	917 917 – Interior Components	Department of Maintenance & Construction
702896	8T09706	2008 Ford	RANGER	1FTYR10U28PB12899	917 917 – Interior Components	Department of Maintenance & Construction
A02938	75709P1	2014 Nissan	Frontier	1N6BD0CT3EN721777	917 917 – Interior Components	Department of Maintenance & Construction
C01686	24528M2	2018 Ford	F-250	1FTBF2A64JEC46110	917 917 – Interior Components	Department of Maintenance & Construction
C01916	09049V2	2019 Ford	F-150 XL	1FTMF1CB1KKE10090	917 917 – Interior Components	Department of Maintenance & Construction
A03650	7WMB993	2017 Chevrolet	VOLT	1G1RC6S55HU162293	920 920 – Construction/Project Management	Department of Maintenance & Construction
A03651	7WMC034	2017 Chevrolet	VOLT	1G1RC6S57HU160206	920 920 – Construction/Project Management	Department of Maintenance & Construction
FA-S01054		2020 Ford	F-150 XL	1FTEX1CP7LKF58226	920 920 – Construction/Project Management	Department of Maintenance & Construction
FA-S01141		2021 Ford	ESCAPE	1FMCU0EZ0MUA79575	920 920 – Construction/Project Management	Department of Maintenance & Construction
FA-S01142		2021 Ford	ESCAPE	1FMCU0EZ9MUA79591	920 920 – Construction/Project Management	Department of Maintenance & Construction
702515	6F07023	2000 Ford	RANGER	1FTYR10V0YPA56596	925 925 – Manor Alterations and Permits	Department of Maintenance & Construction
702523	6F07032	2000 Ford	RANGER	1FTYR10V9YPA59450	925 925 – Manor Alterations and Permits	Department of Maintenance & Construction
702768	7T58940	2005 Ford	RANGER	1FTYR10U45PA47712	925 925 – Manor Alterations and Permits	Department of Maintenance & Construction
C01917	09046V2	2019 Ford	F-150 XL	1FTMF1CB3KKE10091	925 925 – Manor Alterations and Permits	Department of Maintenance & Construction
702487	5Y25768	1999 Ford	E-250 VAN	1FTPE24L0XHA70982	926 926 – Facilities Management	Department of Maintenance & Construction
702490	5Y28863	1999 Ford	E-250 VAN	1FTPE24LXXHA70987	926 926 – Facilities Management	Department of Maintenance & Construction
702875	8N64432	2008 Ford	RANGERXL	1FTYR10UX8PA39005	926 926 – Facilities Management	Department of Maintenance & Construction

702980	8V00222	2008 Ford	E-250 VAN	1FTNE24W49DA49838	926 926 – Facilities Management	Department of Maintenance & Construction
C01740	25288N2	2018 Ford	E-250 VAN	1FTYR2CG0JKA74733	926 926 – Facilities Management	Department of Maintenance & Construction
C01964		2019 Ford	F-350	1FDRF3G65KEG55905	926 926 – Facilities Management	Department of Maintenance & Construction
702518	6F07024	2000 Ford	RANGER	1FTYR10V2YPA56597	932 932 – Paint	Department of Maintenance & Construction
702726	7H72416	2003 Ford	F-250	3FTNF20L63MB49329	932 932 – Paint	Department of Maintenance & Construction
702777	7U30244	2005 Ford	RANGER	1FTYR10U25PA51998	932 932 – Paint	Department of Maintenance & Construction
A03010	47607S1	2014 Ford	E-250	1FTNE2EW4EDA66972	932 932 – Paint	Department of Maintenance & Construction
A03011	47606S1	2014 Ford	E-250	1FTNE2EW2EDA66971	932 932 – Paint	Department of Maintenance & Construction
C01739	25284N2	2018 Ford	E-250 VAN	1FTYR2CG4JKA74735	932 932 – Paint	Department of Maintenance & Construction
C01929	25755V2	2019 Ford	F-250	1FTBF2A63KEF83630	932 932 – Paint	Department of Maintenance & Construction
C01931	60206V2	2019 Ford	F-250	1FTBF2A67KEF83632	932 932 – Paint	Department of Maintenance & Construction
C01952	60250V2	2019 Ford	TRANSIT	1FTYR2CG4KKB57227	932 932 – Paint	Department of Maintenance & Construction
C01953	60249V2	2019 Ford	TRANSIT	1FTYR2CG6KKB57228	932 932 – Paint	Department of Maintenance & Construction
C01963		2019 Ford	F-350	1FDRF3G60KEG55908	932 932 – Paint	Department of Maintenance & Construction
C01966		2019 Ford	F-350	1FDRF3G69KEG55907	932 932 – Paint	Department of Maintenance & Construction
C01979	86750W2	2019 Ford	TRANSIT	1FDBF6PM4KKB57245	932 932 – Paint	Department of Maintenance & Construction
702844	8G78975	2007 Ford	RANGER	1FTYR10U07PA56703	521 521 – Garden Centers	Department of Recreation Services
702717	7G76426	2003 Ford	F-250	1FTNF20L33ED88617	580 580 – Golf Maintenance 27- Hole	Department of Recreation Services
FA-S01057	70532B3	2021 Ford	TRANSIT	1FTYE1Z85LKB43960	600 600 – Recreation Admin	Department of Recreation Services
A02952	69570R1	2014 Ford	E-150 VAN	1FMNE1BL9EDA86005	613 613 – Performing Arts Center	Department of Recreation Services
A00728	31996G1	2012 Ford	F-250	1FTBF2A61CEB42399	614 614 – Clubhouse 4	Department of Recreation Services
A03660	47598C2	2016 Nissan	Frontier	1N6BD0CTXGN901180	614 614 – Clubhouse 4	Department of Recreation Services
C01928	60252V2	2019 Ford	F-250	1FTBF2A66KEF83637	620 620 – Equestrian	Department of Recreation Services
702352	5J85551	1996 Ford	F-250 4X4	1FTHF26H2TEB70037	400 400 – Security Services	Department of Security Services
A00821	74375E1	2012 Nissan	Frontier	1N6BD0CT8CC467282	400 400 – Security Services	Department of Security Services
A00832	87297F1	2012 Nissan	Frontier	1N6BD0CT0CC468149	400 400 – Security Services	Department of Security Services
A00833	87301F1	2012 Nissan	Frontier	1N6BD0CT8CC472000	400 400 – Security Services	Department of Security Services
A02939	75711P1	2014 Nissan	Frontier	1N6BD0CT4EN721965	400 400 – Security Services	Department of Security Services
A03648	7WMB9921	2017 Chevrolet	VOLT	1G1RC6S5XHU161348	400 400 – Security Services	Department of Security Services
A03649	7WMB995	2017 Chevrolet	VOLT	1G1RC6S51HU161772	400 400 – Security Services	Department of Security Services
A03652	7WMH840	2017 Chevrolet	TRAX	3GNCJNSB8HL158226	400 400 – Security Services	Department of Security Services
A03654	7WMH844	2017 Chevrolet	TRAX	3GNCJNSB8HL158145	400 400 – Security Services	Department of Security Services
A03655	7WMH846	2017 Chevrolet	TRAX	3GNCJNSBXHL158115	400 400 – Security Services	Department of Security Services
FA-S01039		2020 Ford	EDGE	2FMPK3G95LBB13021	400 400 – Security Services	Department of Security Services
FA-S01040		2020 Ford	EDGE	2FMPK3G95LBB12600	400 400 – Security Services	Department of Security Services
FA-S01041	8THG350	2020 Ford	EDGE	2FMPK3G98LBB13093	400 400 – Security Services	Department of Security Services
FA-S01176	8YIE524	2021 Ford	EDGE	2FMPK3G96MBA45703	400 400 – Security Services	Department of Security Services
FA-S01177	8YIE517	2021 Ford	EDGE	2FMPK3G94MBA45604	400 400 – Security Services	Department of Security Services
FA-S01178	8YIE521	2021 Ford	EDGE	2FMPK3G93MBA45660	400 400 – Security Services	Department of Security Services
FA-S01179	8YIE519	2021 Ford	EDGE	2FMPK3G90MBA45647	400 400 – Security Services	Department of Security Services

**General Services Department
Unit Inventory - Specialty Equipment
January 2024**

Unit	Year	Make	Model	Work Center Description	Department
A02983	2013	CAT	GC25	311 – Warehouse	Department of Financial Services
C01535	2017	Tennant	S30 RIDER	935 – Janitorial	Department of General Services
700006	1996	Carson	5X10	936 – Streets & Sidewalks	Department of General Services
700009	1996	Carson	5X10	936 – Streets & Sidewalks	Department of General Services
702849	2007	Kawasaki	Mule 3010	936 – Streets & Sidewalks	Department of General Services
702908	2009	Kawasaki	Mule 3010	936 – Streets & Sidewalks	Department of General Services
A00746	2012	John Deere	318 D	936 – Streets & Sidewalks	Department of General Services
A02944	2014	Tennant	9716	936 – Streets & Sidewalks	Department of General Services
C01658	2018	John Deere	BACKHOE	936 – Streets & Sidewalks	Department of General Services
FA-S01328	2023	Big Tex	14LP-	936 – Streets & Sidewalks	Department of General Services
FA-S01335	2023	Kawasaki	MULE PRO-MX- EPS	936 – Streets & Sidewalks	Department of General Services
S01002	2020	MQUIP	AR14H	936 – Streets & Sidewalks	Department of General Services
C01879	2019	Tennant	W20-LP	945 – GRF Janitorial	Department of General Services
C01880	2019	Tennant	1870TO	945 – GRF Janitorial	Department of General Services
701735	1986	Trail King	TK40	960 – Fleet Maintenance	Department of General Services
701971	1988	TOROX	33787	960 – Fleet Maintenance	Department of General Services
C01697	2018	Kawasaki	Mule 4010	960 – Fleet Maintenance	Department of General Services
FA-S01334	2023	Kawasaki	PRO FX	960 – Fleet Maintenance	Department of General Services
FA-S01336	2023	Kawasaki	MULE PRO-MX- EPS	960 – Fleet Maintenance	Department of General Services
FA-S01337	2023	Kawasaki	MULE PRO-MX- EPS	960 – Fleet Maintenance	Department of General Services
FA-S01338	2023	Kawasaki	MULE PRO-FXT-EPS	960 – Fleet Maintenance	Department of General Services
S01015	2020	Kawasaki	4010 MULE	960 – Fleet Maintenance	Department of General Services
C01909	2019	Kawasaki	KAF400JKF	500 – Landscape Admin	Department of Landscape Services
C01910	2019	Kawasaki	KAF400JKF	500 – Landscape Admin	Department of Landscape Services
FA-S01131	2021	Big Tex	14-LD-14BK	500 – Landscape Admin	Department of Landscape Services
FA-S01132	2021	Big Tex	14-LD-14BK	500 – Landscape Admin	Department of Landscape Services
FA-S01133	2021	Big Tex	14-LD-14BK	500 – Landscape Admin	Department of Landscape Services
702911	2009	Kawasaki	Mule 3010	510 – Improvement/Restoration	Department of Landscape Services
S01014	2020	Kawasaki	4010 MULE	510 – Improvement/Restoration	Department of Landscape Services
701493	1985	ZZZZZ	BIRHANZEL	511 – Nursery/Composting	Department of Landscape Services
A00727	2012	John Deere	315	511 – Nursery/Composting	Department of Landscape Services
FA-S01134	2021	KUBOTA	MX6000HST - Tractor	511 – Nursery/Composting	Department of Landscape Services
702729	2004	Kawasaki	Mule 3010D	520 – GRF Grounds Maintenance	Department of Landscape Services
702510	1999	Big Tex	70-PI	520 – GRF Grounds Maintenance	Department of Landscape Services

702887	2008 Big Tex	70LR-14	520 – GRF Grounds Maintenance	Department of Landscape Services
A03646	2017 Kawasaki	4010 MULE	520 – GRF Grounds Maintenance	Department of Landscape Services
A03659	2017 Kawasaki	4010 MULE	520 – GRF Grounds Maintenance	Department of Landscape Services
701736	1986 Trail King	TKT6	530 – Grounds Maintenance	Department of Landscape Services
702459	1991 APPLE	16'	530 – Grounds Maintenance	Department of Landscape Services
702511	1999 Big Tex	70-PI	530 – Grounds Maintenance	Department of Landscape Services
702883	2008 Big Tex	70PI-14	530 – Grounds Maintenance	Department of Landscape Services
702884	2008 Big Tex	70PI-14	530 – Grounds Maintenance	Department of Landscape Services
702885	2008 Big Tex	70PI-14	530 – Grounds Maintenance	Department of Landscape Services
702909	2009 Kawasaki	Mule 3010	530 – Grounds Maintenance	Department of Landscape Services
702910	2009 Kawasaki	Mule 3010	530 – Grounds Maintenance	Department of Landscape Services
702913	2009 Kawasaki	Mule 3010	530 – Grounds Maintenance	Department of Landscape Services
A00451	2003 KALYN	ALL	530 – Grounds Maintenance	Department of Landscape Services
A00724	2012 Kawasaki	Mule 4010	530 – Grounds Maintenance	Department of Landscape Services
A00826	2012 EZ GO	VARIOUS	530 – Grounds Maintenance	Department of Landscape Services
A00827	2012 EZ GO	VARIOUS	530 – Grounds Maintenance	Department of Landscape Services
A01871	2013 Big Tex	10PI-14	530 – Grounds Maintenance	Department of Landscape Services
A01872	2013 Big Tex	10PI-14	530 – Grounds Maintenance	Department of Landscape Services
A01873	2013 Big Tex	10PI-14	530 – Grounds Maintenance	Department of Landscape Services
A01874	2013 Big Tex	10PI-14	530 – Grounds Maintenance	Department of Landscape Services
A01875	2013 Big Tex	10PI-14	530 – Grounds Maintenance	Department of Landscape Services
A02984	2013 Big Tex	10PI-14	530 – Grounds Maintenance	Department of Landscape Services
A02985	2013 Big Tex	10PI-14	530 – Grounds Maintenance	Department of Landscape Services
A02986	2013 Big Tex	10PI-14	530 – Grounds Maintenance	Department of Landscape Services
A02988	2013 Big Tex	10PI-14	530 – Grounds Maintenance	Department of Landscape Services
A02998	2014 John Deere	318 D	530 – Grounds Maintenance	Department of Landscape Services
A03058	2015 Kawasaki	Mule 4010	530 – Grounds Maintenance	Department of Landscape Services
A03063	2015 Kawasaki	Mule 4010	530 – Grounds Maintenance	Department of Landscape Services
A03632	2016 FINN	BB302 - Trailer	530 – Grounds Maintenance	Department of Landscape Services
C01552	2018 Kawasaki	Mule 4010	530 – Grounds Maintenance	Department of Landscape Services
C01553	2018 Kawasaki	4010 MULE	530 – Grounds Maintenance	Department of Landscape Services
C01554	2018 Kawasaki	4010 MULE	530 – Grounds Maintenance	Department of Landscape Services
C01695	2018 Kawasaki	Mule 4010	530 – Grounds Maintenance	Department of Landscape Services
C01698	2018 Kawasaki	Mule 4010	530 – Grounds Maintenance	Department of Landscape Services
C01905	2019 Kawasaki	4010 MULE	530 – Grounds Maintenance	Department of Landscape Services
C01908	2019 Kawasaki	4010 MULE	530 – Grounds Maintenance	Department of Landscape Services
FA-S01089	2021 Kawasaki	4010 MULE	530 – Grounds Maintenance	Department of Landscape Services
FA-S01090	2021 Kawasaki	4010 MULE	530 – Grounds Maintenance	Department of Landscape Services
FA-S01091	2021 Kawasaki	4010 MULE	530 – Grounds Maintenance	Department of Landscape Services
FA-S01180	2021 Kawasaki	Mule FXT	530 – Grounds Maintenance	Department of Landscape Services

FA-S01193	2021 Kawasaki	Mule FXT	530 – Grounds Maintenance	Department of Landscape Services
FA-S01339	2023 Kawasaki	MULE PRO-FXT-EPS	530 – Grounds Maintenance	Department of Landscape Services
FA-S01340	2023 Kawasaki	MULE PRO-FXT-EPS	530 – Grounds Maintenance	Department of Landscape Services
FA-S01346	2023 Big Tex	14LD-14 Dump Trailer	530 – Grounds Maintenance	Department of Landscape Services
FA-S01347	2023 Big Tex	14LD-14 Dump Trailer	530 – Grounds Maintenance	Department of Landscape Services
S01005	2020 Kawasaki	4010 MULE	530 – Grounds Maintenance	Department of Landscape Services
S01006	2020 Kawasaki	4010 MULE	530 – Grounds Maintenance	Department of Landscape Services
S01007	2020 Kawasaki	4010 MULE	530 – Grounds Maintenance	Department of Landscape Services
S01008	2020 Kawasaki	4010 MULE	530 – Grounds Maintenance	Department of Landscape Services
S01009	2020 Kawasaki	4010 MULE	530 – Grounds Maintenance	Department of Landscape Services
S01010	2020 Kawasaki	4010 MULE	530 – Grounds Maintenance	Department of Landscape Services
S01011	2020 Kawasaki	4010 MULE	530 – Grounds Maintenance	Department of Landscape Services
S01013	2020 Kawasaki	4010 MULE	530 – Grounds Maintenance	Department of Landscape Services
700007	1996 Carson	5X10	540 – Irrigation	Department of Landscape Services
702886	2008 Big Tex	70PI-14	540 – Irrigation	Department of Landscape Services
702904	2008 KIA	MINI CARGO	540 – Irrigation	Department of Landscape Services
A00454	2010 KIA	VANGO	540 – Irrigation	Department of Landscape Services
000002	2005 Carson	BOX	550 – Small Equipment Repair	Department of Landscape Services
FA-S01016	2020 John Deere	318G - Tractor	550 – Small Equipment Repair	Department of Landscape Services
700078	1966 John Bean	JOHN BEAN Trailer	560 – Pest Control	Department of Landscape Services
700134	1970 John Bean	JOHN BEAN Trailer	560 – Pest Control	Department of Landscape Services
700615	1970 John Bean	JOHN BEAN Trailer	560 – Pest Control	Department of Landscape Services
701692	1985 John Bean	D010E100F	560 – Pest Control	Department of Landscape Services
FA-S01093	2021 Kawasaki	4010 MULE	560 – Pest Control	Department of Landscape Services
S01012	2020 Kawasaki	4010 MULE	560 – Pest Control	Department of Landscape Services
700012	2000 Carson	6X10	570 – Tree Maintenance	Department of Landscape Services
702566	2000 Carson	5X10	570 – Tree Maintenance	Department of Landscape Services
702981	2009 Vermeer	BC1800XL	570 – Tree Maintenance	Department of Landscape Services
A00642	2012 RAYCO	TR35	570 – Tree Maintenance	Department of Landscape Services
C01551	2018 Kawasaki	Mule 4010	570 – Tree Maintenance	Department of Landscape Services
C01773	2019 Big Tex	35SV-10BK	570 – Tree Maintenance	Department of Landscape Services
C01878	2019 JLG	660SJ	570 – Tree Maintenance	Department of Landscape Services
C01915	2019 Cushman	TRUCKSTER	570 – Tree Maintenance	Department of Landscape Services
C01996	2020 Vermeer	BC1800A	570 – Tree Maintenance	Department of Landscape Services
FA-S01088	2021 Kawasaki	4010 MULE	570 – Tree Maintenance	Department of Landscape Services
700011	1997 Carson	5X10	912 – Carpentry	Department of Maintenance & Construction
A00788	2012 JLG	660SJ	912 – Carpentry	Department of Maintenance & Construction
C01696	2018 Kawasaki	Mule 4010	912 – Carpentry	Department of Maintenance & Construction
C01980	2019 JLG	660SJ	912 – Carpentry	Department of Maintenance & Construction
C01993	2020 JLG	8042	912 – Carpentry	Department of Maintenance & Construction

C01994	2020 JLG	8042	912 – Carpentry	Department of Maintenance & Construction
A03569	2015 HAUL	HAUL	913 – Electrical	Department of Maintenance & Construction
700008	1996 Carson	5X10	914 – Plumbing	Department of Maintenance & Construction
C01906	2019 Kawasaki	4010 MULE	914 – Plumbing	Department of Maintenance & Construction
FA-S01092	2021 Kawasaki	4010 MULE	914 – Plumbing	Department of Maintenance & Construction
702869	2007 JLG	460SJ	932 – Paint	Department of Maintenance & Construction
702905	2008 JLG	600SJ	932 – Paint	Department of Maintenance & Construction
A00697	2011 JLG	450AJII	932 – Paint	Department of Maintenance & Construction
A00722	2012 Kawasaki	Mule 4010	932 – Paint	Department of Maintenance & Construction
C01555	2018 Kawasaki	4010 MULE	932 – Paint	Department of Maintenance & Construction
C01556	2018 Kawasaki	4010 MULE	932 – Paint	Department of Maintenance & Construction
C01632	2018 JLG	2630ES	932 – Paint	Department of Maintenance & Construction
C01699	2018 Kawasaki	Mule 4010	932 – Paint	Department of Maintenance & Construction
C01730	2018 JLG	400S	932 – Paint	Department of Maintenance & Construction
FA-S01094	2021 Kawasaki	4010 MULE	932 – Paint	Department of Maintenance & Construction
FA-S01095	2021 Kawasaki	4010 MULE	932 – Paint	Department of Maintenance & Construction
S01001	2017 MALTA	X1250	932 – Paint	Department of Maintenance & Construction
702295	1999 KUBOT	L4200DT	580 – Golf Maintenance 27- Hole	Department of Recreation Services
702594	2001 KUBOTA	M4900S - Tractor	580 – Golf Maintenance 27- Hole	Department of Recreation Services
702916	2009 KUBOT	L2800HST-F	580 – Golf Maintenance 27- Hole	Department of Recreation Services
A00453	2010 KIA	VANGO	580 – Golf Maintenance 27- Hole	Department of Recreation Services
A01877	2012 Cushman	84063	580 – Golf Maintenance 27- Hole	Department of Recreation Services
A02987	2013 Big Tex	10PI-14	580 – Golf Maintenance 27- Hole	Department of Recreation Services
A02999	2014 John Deere	318 D	580 – Golf Maintenance 27- Hole	Department of Recreation Services
A03059	2015 Kawasaki	Mule 4010	580 – Golf Maintenance 27- Hole	Department of Recreation Services
A03060	2015 Kawasaki	Mule 4010	580 – Golf Maintenance 27- Hole	Department of Recreation Services
A03061	2015 Kawasaki	Mule 4010	580 – Golf Maintenance 27- Hole	Department of Recreation Services
A03062	2015 Kawasaki	Mule 4010	580 – Golf Maintenance 27- Hole	Department of Recreation Services
A03644	2017 Kawasaki	4010 MULE	580 – Golf Maintenance 27- Hole	Department of Recreation Services
A03645	2017 Kawasaki	4010 MULE	580 – Golf Maintenance 27- Hole	Department of Recreation Services
A03647	2017 Kawasaki	4010 MULE	580 – Golf Maintenance 27- Hole	Department of Recreation Services
A03656	2017 Kawasaki	4010 MULE	580 – Golf Maintenance 27- Hole	Department of Recreation Services
A03657	2017 Kawasaki	4010 MULE	580 – Golf Maintenance 27- Hole	Department of Recreation Services
A03658	2017 Kawasaki	4010 MULE	580 – Golf Maintenance 27- Hole	Department of Recreation Services
C01907	2019 Kawasaki	4010 MULE	580 – Golf Maintenance 27- Hole	Department of Recreation Services
C01998	2020 KUBOT	L47	580 – Golf Maintenance 27- Hole	Department of Recreation Services
FA-S01345	2023 GENIE	AWP-36-AC - Lift	613 - Clubhouse 3	Department of Recreation Services
A03000	2014 GENIE	GS1930	615 - Clubhouse 5	Department of Recreation Services
C01763	2019 APEXX	BOX	615 - Clubhouse 5	Department of Recreation Services
702586	2001 BRI-MA	DT 610-10	620 – Equestrian	Department of Recreation Services

ATT- 6

A00470	2010 Kawasaki	Mule 4010	620 – Equestrian	Department of Recreation Services
FA-S01327	2023 Trails West Trailer	ROYALE	620 – Equestrian	Department of Recreation Services
702595	2001 KUBOT	L3710HST-R	620 – Equestrian	Department of Recreation Services
C01655	2018 Club Car	CARRY ALL	670 – Golf Operations 27-Hole	Department of Recreation Services
C01656	2018 Club Car	CARRY ALL	670 – Golf Operations 27-Hole	Department of Recreation Services
C01657	2018 Club Car	CARRY ALL	670 – Golf Operations 27-Hole	Department of Recreation Services
700600	1998 JLGXX	20 VP		
A00493	2007 CAT	928G		

Total Number 162

THIS PAGE LEFT BLANK INTENTIONALLY

STAFF REPORT

DATE: February 7, 2024
FOR: Mobility and Vehicles Committee
SUBJECT: 2024 Vehicle CIP - Security Vehicles Specifications

RECOMMENDATION

Approve the 2024 Vehicle CIP specifications included in Attachment 1, Vehicle Specifications Spreadsheet for Security Vehicles.

BACKGROUND

The General Services Department is responsible for the maintenance and replacement of approximately 260 Golden Rain Foundation (GRF) vehicles and 160 special equipment units. On September 5, 2023, the GRF Board approved an overall 2024 Vehicle Replacement budget of \$1,493,000 to replace GRF vehicles, including \$191,000 for three Security vehicles. The GRF Mobility and Vehicles Committee Charter states that the Mobility and Vehicles Committee shall review the specifications recommended by the Managing Agent for the procurement of GRF vehicles. Each year, the General Services Department presents the proposed vehicle specifications to the Mobility & Vehicles Committee for review and approval.

During the development of the annual Vehicle CIP, Fleet Maintenance staff seeks input from departments regarding the vehicle specifications that are required to ensure that work can be performed safely, efficiently, and economically. In addition, in 2022 General Services staff completed a Fleet Right-Sizing Assessment that is projected to save approximately \$620,000 over a four-year period. During the Fleet Right-Sizing Assessment, General Services staff met with department heads and staff from each work center to make sure the number and type of vehicles being used are appropriate for the work center's needs. During the 2022 Fleet Right-Sizing Assessment, the Security Department downsized their Security fleet by two security vehicles and one F-250 truck.

DISCUSSION

The attached 2024 Vehicle Specifications for Security Vehicles spreadsheet (Attachment 1) includes the number of vehicles and related funding approved by the GRF board for the 2024 fiscal year. In addition, the spreadsheet includes the specifications recommended for Security vehicles. These specifications were obtained from manufacturer's websites for the recommended vehicle make, model, and vehicle trim level. The vehicles purchased will be significantly similar to what is approved, however, the exact specifications may differ if vehicle manufacturer offerings vary at the time of purchase.

These vehicles specifications were presented at the November 6, 2023 Mobility and Vehicles Committee meeting for review and consideration. The Committee recommended that this item be brought back at a future meeting with additional information to confirm that the vehicles are needed. The Security Director provided the information in the following Table A that describes how the 17 Security vehicles are used. In addition, the 2024 Vehicle Specifications for

Security Vehicles spreadsheet (Attachment 1) has been updated with additional repair history for the vehicles being replaced.

Table A

Asset No.	Year	Make	Model	Mileage	Used By:	Comments
702352	1996	Ford	F-250	30,860	Stores emergency equip.	Fleet Right-Sizing: replacing with trailer in 2024
A00821	2012	Nissan	Frontier	99,879	Traffic Specialist	
A00832	2012	Nissan	Frontier	114,676	Traffic Specialist	
A00833	2012	Nissan	Frontier	87,135	Traffic Specialist	
A02939	2014	Nissan	Frontier	101,235	Security Patrol Officer	
A03648	2017	Chevrolet	VOLT	41,754	Compliance Inspector	
A03649	2017	Chevrolet	VOLT	72,260	Rover	
A03652	2017	Chevrolet	TRAX	109,992	Gate Ambassador Sup.	Replace in 2024
A03654	2017	Chevrolet	TRAX	81,489	Security Patrol Officer	Replace in 2024
A03655	2017	Chevrolet	TRAX	79,786	Compliance Inspector	Replace in 2024
FA-S01039	2020	Ford	EDGE	7,210	Watch Commander	
FA-S01040	2020	Ford	EDGE	41,365	Supervisor	
FA-S01041	2020	Ford	EDGE	32,428	Supervisor	
FA-S01176	2021	Ford	EDGE	26,644	Supervisor	
FA-S01177	2021	Ford	EDGE	655	Ops Manager/Admin	
FA-S01178	2021	Ford	EDGE	11,167	Security Patrol Officer	
FA-S01179	2021	Ford	EDGE	25,144	Security Patrol Officer	

FINANCIAL ANALYSIS

There is no fiscal impact associated with this item. Funding is allocated in the 2024 Vehicle CIP.

Prepared By: Robert Carroll, Director of General Services
Reviewed By: Steve Hormuth, Director of Financial Services
 Eric Nunez, Director of Security

ATTACHMENT(S)

ATT-1: 2024 Vehicle Specifications Spreadsheet for Security Vehicles

GRF Approved Vehicles	Approved Funding	Vehicle Status/Repair History	Average Mileage or (Hours)	Average Age	Specifications	Work Centers
Security Vehicles (3)	191,000	These Trax have been problematic. Unit 3652: Replaced mass air flow sensor, fixed coolant leak, replaced turbo oil lines, replaced water pump, replaced thermostat, replaced belt tensioner, repaired engine oil cooler, replaced engine coolant water outlet. Unit 3654: Repair oil pump leak, replaced valve cover, replace turbo oil lines, replaced engine cooler kit, replaced alternator, replaced mass air flow sensor, replaced purge solenoid, replaced heater hose, replaced outer axle assembly. Unit 3655: Replaced water pump, replaced alternator, repaired air conditioning	85,400	7 y/o	Ford Escape Active or similar: Oxford White, 1.5L EcoBoost engine, front-wheel drive, automatic transmission, power windows, power steering, power brakes, dual-zone electronic automatic temperature control, 17” aluminum wheels, cloth interior, carpeted front and rear floor mats, power driver seat, manual passenger seat, evasive steering assist, 13.2" LCD capacitive touchscreen, lane centering assist, digital rear view camera	400 Security

THIS PAGE LEFT BLANK INTENTIONALLY

STAFF REPORT

DATE: February 7, 2024
FOR: Mobility and Vehicles Committee
SUBJECT: 2024 Vehicle CIP – Transportation Bus Specifications

RECOMMENDATION

Approve the 2024 Vehicle CIP specifications included in Attachment 1, Vehicle Specifications Spreadsheet for Transportation Bus.

BACKGROUND

The General Services Department is responsible for the maintenance and replacement of approximately 260 Golden Rain Foundation (GRF) vehicles and 160 special equipment units. On September 5, 2023, the GRF Board approved an overall 2024 Vehicle Replacement budget of \$1,493,000 to replace GRF vehicles, including one Transportation bus for \$178,000. The GRF Mobility and Vehicles Committee Charter states that the Mobility and Vehicles Committee shall review the specifications recommended by the Managing Agent for the procurement of GRF vehicles. Each year, the General Services Department presents the proposed vehicle specifications to the Mobility & Vehicles Committee for review and approval.

During the development of the annual Vehicle CIP, Fleet Maintenance staff seeks input from departments regarding the vehicle specifications that are required to ensure that work can be performed safely, efficiently, and economically. In addition, in 2022 General Services staff completed a Fleet Right-Sizing Assessment that is projected to save approximately \$620,000 over a four-year period. During the Fleet Right-Sizing Assessment, General Services staff met with department heads and staff from each work center to make sure the number and type of vehicles being used are appropriate for the work center's needs. During the 2022 Fleet Right-Sizing Assessment, the General Services Department identified that the Transportation fleet could be reduced by one bus. This reduction will take place in 2025 and will save GRF an estimated \$200,000.

DISCUSSION

The attached 2024 Vehicle Specifications for Transportation Bus (Attachment 1) includes the number of vehicles and related funding approved by the GRF board for the 2024 fiscal year. In addition, the spreadsheet includes the specifications recommended for the Transportation Bus and a recent vehicle repair history. These specifications were obtained from manufacturer's websites for the recommended vehicle make, model, and preferred options. The vehicles purchased will be significantly similar to what is approved, however, the exact specifications may differ if vehicle manufacturer offerings vary at the time of purchase.

These vehicles specifications were presented at the November 6, 2023 Mobility and Vehicles Committee meeting for review and consideration. The Committee recommended that this item be brought back at a future meeting. Table A includes a list of vehicles assigned to Transportation, and includes a vehicle description, capacity, model year, and approximate mileage. Although the list includes a route the bus may be assigned to, the vehicles are rotated

on a regular basis. In addition, the 2024 Vehicle Specifications for Transportation Vehicles spreadsheet (Attachment 1) has been updated with additional repair history for the bus being replaced.

Table A

		Vehicle No.	Capacity	Vehicle Model	Year	Mileage
1	Route 1	A03012	19	Chevrolet Arboc	2014	188,442
2	Route 2	S01135	19	Ford E-450 Arboc	2020	4,758
3	Route 3	A03625	19	Chevrolet Arboc	2015	144,525
4	Route 4	A03626	19	Chevrolet Arboc	2015	126,069
5	Route 5	A03627	19	Chevrolet Arboc	2015	154,178
6	Route 6	C01995	18	Chevrolet Arboc	2019	46,841
7	Wellness Route	S01017	18	Chevrolet Arboc	2019	42,962
8	Commercial Route 1	C01911	20	Chevrolet Arboc	2019	54,056
9	Commercial Route 2	C01921	18	Chevrolet Arboc	2019	60,211
10	Fixed Route Spare 1	C01559	8	Dodge Arboc	2018	80,994
11	Fixed Route Spare 2	C01738	8	Ford Transit Arboc	2018	97,105
12	Tours/Shuttles*	A03016	20	Chevrolet Arboc	2014	159,920
13	Journey 1	FA-SO1325	8	Dodge Promaster	2023	1,942
14	Journey 2	FA-SO1326	8	Dodge Promaster	2023	3,057
15	Journey Spare 1	A00500	3	Toyota Sienna	2017	68,408
16	Supervisor/Coord.	C01896	4	Transit Connect	2019	17,437

*Do not replace in 2025 (Fleet Right-Sizing Assessment)

FINANCIAL ANALYSIS

There is no fiscal impact associated with this item. Funding is allocated in the 2024 Vehicle CIP.

Prepared By: Robert Carroll, Director of General Services
Reviewed By: Steve Hormuth, Director of Financial Services

ATTACHMENT(S)

ATT-1: 2024 Vehicle Specifications Spreadsheet for Transportation Vehicles

GRF Approved Vehicles	Approved Funding	Vehicle Status/Repair History	Average Mileage or (Hours)	Average Age	Specifications	Work Centers
Transportation Bus	178,000	Air compressor replaced, suspension bushing replaced, driver's A/C repaired, A/C hoses replaced, several ramp repairs. Other common problems with these high mileage units that we want to avoid: Fuel pumps fail; cost for pumps, injectors, lines is \$7K (parts only). Transmission problems common for these high mileage units	188,442	10 y/o	Dodge Pro Master 3500 Low- Floor Van or similar: White, 3.6L V-6, gas engine, automatic transmission, power windows, power steering, power brakes, 36” A&M systems power door, LED strip lighting, emergency window, manual swing away ramp, back-up alarm-interlock system, 9 passenger, 2 wheelchair capacity	970 Transportation